

April 19-22, 2012 — Raleigh Marriott City Center, Raleigh, North Carolina



NBASLH

NATIONAL BLACK ASSOCIATION FOR SPEECH-LANGUAGE AND HEARING ANNUAL CONVENTION



The National Black Association for Speech Language Hearing (NBASLH) is Shaping The Future in 2012, so that the association and its members will be at the forefront of human communication disorders. As we convene in Raleigh, North Carolina, for our annual convention we are well aware of the recently released World Health Organization's (WHO) "World Report on Disability" (2011) and the implications it has for our profession. The future is demanding a highly skilled, ethical, and culturally competent communication disorders professional.

The WHO report stated that "more than one billion people in the world live with some form of disability, of whom nearly 200 million experience considerable difficulties in functioning".

In the United States "approximately 7.5 million people have trouble using their voices; the prevalence of speech sound disorders in young children is 8 to 9 percent; it is estimated that more than 3 million Americans stutter; between 6 and 8 million people in the U.S. have some form of language impairment; approximately 10 million Americans are evaluated each year with swallowing difficulties; an independent researcher estimates that 31.5 million Americans had hearing loss in 2004": according to the National Institute on Deafness and Other Communication Disorders (NIDCD). In the next few years those numbers are expected to increase dramatically in relation to an aging population, medical advances, and a greater need for competent communicators in the information technology age.

In years to come, like the near future year of 2013, people inside and outside our association will be telling and writing about the contributions NBASLH made in 2012 to manage human communication disorders on the national and global levels. Now, as we convene in Raleigh, let's shape our future in the true spirit of NBASLH, holding fast to our mission.

NBASLH is a truly gifted and spirited association, "and to whom much is given much is expected." We thank Dr. Rachel Williams and her committee for putting together another wonderful convention.

We have gathered in Raleigh to share, to encourage, to guide, to rejuvenate, to party, to learn, and to tell our own story about how we are Shaping The Future.

Enjoy,

Arnell Brady

Arnell Brady, MA, CCC-SLP
NBASLH Chairman 2011 – 13
National Board of Directors



On behalf of the Association, I am delighted to invite you to attend the 34th National Black Association for Speech-Language and Hearing (NBASLH) Annual Convention in the splendid state capital city of Raleigh, North Carolina. The theme for this year's convention is **NBASLH Shaping the Future.**

The Greater Raleigh Convention and Visitors Bureau promote Raleigh as a city that **"bursts with energy and excitement but never forgets its fine Southern manners."** So as your Convention Chair and being the Southern lady that I am, I would like to first say thank you to the Executive Board, Convention Committee and the Members of NBASLH for providing me with the opportunity to develop the programs and organize the annual conventions for past three years.

This will be my last convention as your Chair and I must say it has been a remarkable experience. I have truly been encouraged and motivated by the various encounters that I have shared with all of you.

From the results of the Call for Papers, it appears that we are already taking some of the burst of energy and excitement from Raleigh and putting it to brilliant use on our pathway to **Shaping the Future.** For the first time in a while, I am pleased to publicize that we had more than 100 submissions to choose from in order to establish our amazing program. The Convention Committee has worked diligently to select gifted presenters and to offer outstanding sessions on a variety of topics that relate to our fields of speech-

language pathology and audiology. Additionally, we will continue to honor founding member of NBASLH, Dr. Bailey, by highlighting the fourth presentation of our Donn F. Bailey Memorial Lecture Series.

If that wasn't enough to entice you to attend this year's convention let me share with you some additional excellent and wonderful news. I am thrilled to announce that at our Opening Session we will have an authentic representative of the city of Raleigh and the epitome of NBASLH and convention theme as our speaker, **Mrs. Doanne Ward-Williams.** Mrs. Ward-Williams is young professional who is always full of positive energy and exciting professional events taking place in her life. For that reason, I cannot wait for you to hear how she would like to enhance and strengthen the future of NBASLH.

On Friday, we welcome a session from ASHA President **Dr. Paul Rao.** Dr. Rao's presentation will address ASHA's Revised Code of Ethics. As he states, the revised ASHA Code of Ethics is the invaluable compass for staying "on course" in your professional conduct. In addition, we will have a highlighted presentation from the illustrious **Dr. Joan Payne.** Later on Friday evening, at our Awards Dinner, we will have the pleasure to hear words of wisdom from our invited speaker **Dr. Ida Stockman.** Both of these distinguished ladies have certainly provided us with significant

continued on page 2



NBASLH 2011 ANNUAL CONVENTION

700 McKnight Park Drive, Suite 708, Pittsburgh, PA 15237
Phone: 412-366-1177 — Fax: 412-366-8804 — www.nbaslh.org
Email: nbaslh@nbaslh.org

Message From the Convention Chair

continued from page 1

contributions in the past and continue to lead us into the future by their astounding actions.

Our schedule for Saturday will again continue to support our NSIG members with a highlighted presentation by notable **Dr. Charles Ellis**. Dr. Ellis' presentation will give us a glimpse into the future by providing an overview of the use of Activation Likelihood Estimate (ALE) and the BrainMap database for studies in CSD. Also, the focus of our programming efforts on Saturday will be geared toward our students and young professionals. Our Student Representative, Mr. Frederick Turner is planning to inspire these groups with interesting topics for discussion during the Student-Mentor luncheon and at the Student/New Professionals Chat Session. Furthermore, Mr. Turner has a way of persuading all of us to get involved in order to support our students by providing stimulating fund raising events such as the Men of NBASLH Live Auction. If you missed the auction last year, I suggest that you come to North Carolina with a few extra dollar bills in hand, so that you can enthusiastically participate in what he has in store for us. Lastly, speaking of the Men of NBASLH, we will hold a special session for our male attendees. This open panel presentation will include a comprehensive question and answer dialogue with some of our prominent male members from a variety of professional settings.

With that said, I know that Raleigh is the perfect place for us to come together to take pride in who we are as an association and get the creative forces flowing to mold us into an influential culturally and linguistically diverse group ready to take on the challenges of the 21st century and beyond.

See you in Raleigh,

Rachel Williams

Rachel Williams, PhD, CCC-SLP
NBASLH Convention Chair



Convention Highlights

Opening Session

Thursday, April 19, 2012 - 6:00 pm – 7:00 pm

Featured Presenter: Mrs. Doanne Ward-Williams presenting The Role of NBASLH in “Shaping My Future”

Mrs. Ward-Williams presentation will focus on the integral role that NBASLH played in not only reaching her career goals, but also her personal life. The leadership training and encouragement that was instilled in her as a student member of NBASLH gave her the confidence to step through several open doors. Mrs. Ward-Williams journey from student representative of NBASLH to becoming a member of the board of directors of ASHA's Political Action Committee demonstrates that NBASLH has truly “shaped her future”!

Opening Reception

Thursday, April 19, 2012 – 7:00 pm – 9:00 pm

Relax with colleagues, old and new, while nibbling on light fare hors d'oeuvres.

Annual Membership Meeting

Friday, April 20, 2012 – 5:00 pm

Join the NBASLH Executive Board for the Annual Meeting. This will be your opportunity to share in the success and accomplishments of NBASLH for the past year and learn what is in store for NBASLH during year 2012.

NBASLH Annual Awards Dinner

Friday, April 20, 2012 – 7:00 pm – 9:00 pm

Featured Presenter: Dr. Ida Stockman, presenting The Challenges of Change

The Annual Awards Dinner is included in your registration fee, however, additional tickets may be purchased in advance for guests. Please see the registration form for details.

Student-Mentor Luncheon

Saturday, April 21, 2012 – 12:30 pm – 2:00 pm

The Student-Mentor Luncheon presents the opportunity for students and mentors to enjoy a program specifically designed for students. During the luncheon, the Student Research Award recipient will present a synopsis of their research.

There is an extra cost to attend this event. Please see the registration form for details.

Sunday Serenade – Farewell Gospel Brunch

Sunday, April 22, 2012 – 8:30 am – 10:00 am

Bid a fond farewell to old friends and new while enjoying a continental breakfast. Also, during this time of fellowship, rejuvenate your spirit by listening to a sweet serenade by Ms. Jaquetta Perry.

There is an extra cost to attend this event. Please see the registration form for details.



The National Black Association for Speech-Language & Hearing is approved by the Continuing Education Board of the American Speech-Language-Hearing Association (ASHA) to provide continuing education activities in

speech-language pathology and audiology. **See course information for number of ASHA CEUs, instructional level and content area.** ASHA CE Provider approval does not imply endorsement of course content, specific products or clinical procedures.

**This course is offered for up to 2.05 ASHA CEUs
(Various levels, Professional area)**

PRAXIS ALERT

The Praxis Review Course is a comprehensive three-day program. Therefore, students registering for the PRAXIS Review Course should NOT register for the Convention.



NBASLH wants to keep you up-to-date on Convention information with Twitter and Facebook.

Highlighted Presenters



Charles Ellis, Jr., PhD

Dr. Charles Ellis, Jr., is an associate professor at the Medical University of South Carolina (MUSC) in Charleston, South Carolina. Dr. Ellis' research emphasizes neurologically based disorders of communication and health disparities and minority health issues. He received his BS and MS from The University of Georgia and PhD from the University of Florida. Dr. Ellis has more than 40 publications related to neurogenic communication disorders and health disparities/minority health issues. Dr. Ellis was awarded the MUSC Foundation Teaching Excellence Award in 2007 and named the University of Florida College of Public Health and Health Professions Outstanding Young Alumnus in 2008. In 2011, he was awarded the ASHA Certificate of Recognition for Special Contribution in Multicultural Affairs.



Joan C. Payne, PhD, ASHA Fellow

Dr. Joan C. Payne is professor in the Department of Communication Sciences and Disorders at Howard University where she has been an administrator at the Department and School of Communication. She has been an invited lecturer at the University of Maryland's University Center, the George Washington University Area Geriatric Education Center Consortium, the National Rehabilitation Hospital, the District of Columbia Speech and Hearing Association Winter Workshops, Conventions of the American Speech-Language-Hearing Association, the Maryland Speech-Language-Hearing Association, Columbia University, the Third World Congress in Communications in Dakar, Senegal, the University of Vermont, and the International Congress of Logopedics and Phoniatics in Tokyo, Japan. Her visiting professorships include the Universidade Tuiuti do Paraná in Curitiba, Brazil and Tennessee State University in Nashville, Tennessee.



Paul Rao, PhD

Dr. Paul Rao is the 2011 ASHA President and is the Vice President of Operations at the National Rehabilitation Hospital (NRH) in Washington, DC. Dr. Rao is a Visiting Professor at the University of Maryland, and in 2000, became a Certified Professional in Healthcare Quality and a Certified Healthcare Executive. Dr. Rao received his Bachelor's Degree in philosophy from St. Vincent College in Latrobe, Pennsylvania, his Master's in speech pathology from Catholic University in Washington, DC, and his PhD in hearing and speech science from the University of Maryland in College Park, Maryland. Dr. Rao has published numerous articles and chapters on such topics as customer service, policy and procedures, supervision, health literacy and management. He serves on the editorial board of *Topics in Stroke Rehabilitation* and *Advance for Directors*. Dr. Rao is a Fellow in both ASHA and the American College of Healthcare Executives.



Ida J. Stockman, PhD, ASHA Fellow

Dr. Ida J. Stockman, is professor emerita at Michigan State University. Her work has focused on multicultural issues generally and on speech-language acquisition and assessment of African American children, specifically. A founding member of NBASLH, she created its annual scholar-mentor award and student research scholarship award competition. In recognition of her research, teaching and service contributions to the profession, Dr. Stockman has received the teacher-scholar and professional services awards from NBASLH, distinguished faculty awards from Michigan State University and the State of Michigan's Governing Board of Higher Education, and the multicultural award from ASHA. Dr. Stockman is also an ASHA Fellow and a recipient of the ASHA Honors.

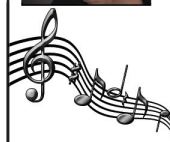


Doanne Ward-Williams, MEd

Doanne Ward-Williams, MEd, CCC-SLP, is a bilingual speech language pathologist and the director of two private practices in speech pathology. TheraPlay Bilingual Solutions, LLC, focuses on English and Spanish-speaking preschoolers in Wake County in the North Carolina Pre-K Program. Her second practice, Carolina Speech Consultants, PLLC offers services in accent modification and corporate communication training for professionals locally and via web-based videoconferencing. She holds a Certificate of Clinical Competence with the American Speech-Language-Hearing Association (ASHA) and is board licensed in the state of North Carolina. Mrs. Ward-Williams is a member of the American Academy of Private Practice in Speech Pathology & Audiology, the Corporate Speech Pathology Network (CORSPAN), the North Carolina Speech Hearing, and Language Association, the Greater Raleigh Chamber of Commerce, and Delta Sigma Theta Sorority, Inc. Mrs. Ward-Williams served as past treasurer of NBASLH and currently serves on ASHA's Political Action Committee Board of Directors.



Ms. Jaquetta Perry-Boyd will be NBASLH's featured performer at the Sunday, Serenade-Farwell Gospel Brunch. She earned her Master's Degree in Communication Disorders from North Carolina Central University. She motivates, inspires and encourages others through music and movement. She enjoys making a difference!



Calling All Convention Attendees!

NBASLH needs you to volunteer.

Volunteer opportunities available include:

- Registration
- Moderator
- Administrative
- Stuffing Bags
- Hostess

No experience is necessary. Check the NBASLH website for additional information.



Attention
Men of NBASLH

SPECIAL PRESENTATION

A Man In A Woman's World: Advantages/ Disadvantages of Being a Male Speech-Language Pathologist, Steven G. Jackson, MEd

This presentation will feature a Men of NBASLH Panel Discussion from 2:00-2:30 pm.

NBASLH Convention Program At-A-Glance

THURSDAY, APRIL 19, 2012

11:00 am - 6:00 pm	Registration Open
1:00 pm - 5:30 pm	Concurrent Educational Sessions
3:00 pm - 5:00 pm	Exhibits/Vendors Open
6:00 pm - 7:00 pm	Opening Session
7:00 pm - 9:00 pm	Opening Reception

FRIDAY, APRIL 20, 2012

7:30 am - 5:30 pm	Registration Open
8:00 am - 5:00 pm	Exhibits/Vendors Open
8:00 am - 5:00 pm	Concurrent Educational Sessions
2:15 pm - 2:45	Affiliate Chapter Meeting
3:00 pm - 4:30 pm	Student/New Professional Chat Session
5:00 pm - 5:30 pm	NBASLH Annual Membership Meeting
7:00 pm - 9:00 pm	NBASLH Annual Awards Dinner

SATURDAY, APRIL 21, 2012

7:30 am - 5:30 pm	Registration Open
8:00 am - 5:15 pm	Concurrent Educational Sessions
8:00 am - 2:00 pm	Exhibits/Vendors Open
12:30 pm - 2:00 pm	Student-Mentor Luncheon (Co-Sponsored with ASHA)
4:30 pm - 5:00 pm	NSIG Meeting

SUNDAY, APRIL 22, 2012

8:30 am - 10:00 am	Sunday Serenade – Farewell Gospel Brunch
--------------------	--

Short Courses

THURSDAY, APRIL 19

2:30 pm - 5:30 pm

SC 1 *Foreign Accent Syndrome*, Sarah Ghaleb Abulibdeh, BS; Carolyn M. Mayo, PhD

FRIDAY, APRIL 20

9:15 am - 12:15 pm

SC 2 *Recession Proof Speech-Language Pathologist: Is It Possible?*, Roger Lamar Grimsley, MEd

SATURDAY, APRIL 21

8:00 am - 11:00 am

SC 3 *Removing the Training Wheels: A Round Table Forum on CFY*, Shameka Nicole Johnson, Med; Tinita Ortega, MS; Alaina Sherrell Davis, MS; Valencia Cordova Perry, MS

9:15 am - 12:15 pm

SC 4 *NSIG Special Presentation*, by KayPentax, CompleteSpeech and Vital Stim

2:00 pm - 5:00 pm

SC 5 *Using Therapeutic Music to Improve Listening in Children With Auditory Processing Deficits*, Jay R Lucker, EdD

Mini-Seminars

THURSDAY, APRIL 19

1:00 pm - 2:00 pm

MS 1 *Linking ASD Measures to the WHO's ICF-CY Framework*, Nikita Galla, BS; Heidi Lynna Hawthorn, BS; Mary Jo Cooley Hidecker, PhD; Byron Ross, PhD; Briano Rezze, MS; Thad Allen, BS; Peter Rosenbaum, MD

1:00 pm - 2:00 pm

MS 2 *Working With Culturally Unenlightened Clients and Families*, Robert Mayo, PhD; Brittney C. Aiken, BA; Terri Harris, MEd

2:15 pm - 3:15 pm

MS 3 *A Sista in China: My Journey to Cultural Awareness and Sensitivity*, Katrina Evette Miller, MA, CBIS

3:00 pm - 4:00 pm

MS 4 *Generating Clinical Funding While Training Student Clinicians*, Martine Elie, PhD; Wilhelmina Wright-Harp, PhD

FRIDAY, APRIL 20

8:00 am - 9:00 am

MS 5 *Assessing the System of Marking Past Events in AAE-Speaking Children*, Frances A. Burns, PhD

8:00 am - 9:00 am

MS 6 *Dialectical Variations in Standardized Testing: A Classification Process*, Cathy A. Runnels, MS

9:15 am - 10:15 am

MS 7 *Assessment, Diagnosis and Treatment of Cleft Lip/Palate and VPI and the African-American Population*, Nancy Gauvin, MS

9:15 am - 10:15 am

MS 8 *Community Connections: The Key to (Re)Engagement for the Adult With Aphasia*, Maura English Silverman, MS

9:30 am - 10:30 am

MS 9 *Assessing Attention Deficit Disorders in Non-Traditional College Students*, Arnell Brady, MA; Ronald C. Jones, PhD

10:00 am - 11:00 am

MS 10 *Mining Research of Pragmatic Language Behavior in African American Children: A Systematic Literature Review*, Yvette D. Hyter, PhD; Kenyatta O. Rivers, PhD; Glenda DeJarnette, PhD

Mini-Seminars (continued)

10:30 am - 11:30 am

MS 11 *Improving Client Outcomes: A University Clinic and Public School Collaborative*, Akilah R. Heggs, MA

10:45 am - 11:45 am

MS 12 *iTherapy: Discovering the Endless Possibilities With the iPad*, Doanne L. Ward-Williams, MEd



HIGHLIGHTED PRESENTATION

11:15 am - 12:15 pm

MS 13 *Culture, Caregiving and Communication Disorders*, Joan C. Payne, PhD, ASHA Fellow



HIGHLIGHTED PRESENTATION

1:00 pm - 2:30 pm

MS 14 *A Man in a Woman's World: Advantages/Disadvantages of Being a Male Speech-Language Pathologist*, Steven Gregory Jackson, MEd

This presentation will feature a Men of NBASLH Panel Discussion from 2:00-2:30 pm.

1:00 pm - 2:00 pm

MS 15 *Clinical Supervision in the 21st Century: Students and Cyberspace*, Nichelle Verna Porter, MA; Katrina E. Miller, MA; Zaneta Rosboro Ponton, MEd

1:00 pm - 2:00 pm

MS 16 *Let's Talk Trash - A Cost-Efficient Approach to Intervention*, Merrill Kay Catt, MSP

2:15 pm - 3:15 pm

MS 17 *Developing Children's Language and Literacy Skills Using Book-Reading Activities*, Sandra C. Jackson, PhD; April Holbrook, BA; Jessica Browning, BS; Amanda Carter, BS; Erin Flannery, BS; Cassandra Wade, BA

2:30 pm - 3:30 pm

MS 18 *Blast Injuries and Posttraumatic Stress Disorder*, Alaina S. Brooks, MS; Joan C. Payne, PhD

2:45 pm - 3:45 pm

MS 19 *Delivering an Online Praxis Preparation Course: Lessons From 10 Years Experience*, Kay T. Payne, PhD

3:30 pm - 4:30 pm

MS 20 *Pudding Anyone?!?!*, Michelle D. Thompson, MEd

3:30 pm - 4:30 pm

MS 21 *Mentoring Isn't Just for Students*, Jay R. Lucker, EdD



HIGHLIGHTED PRESENTATION

4:00 pm - 5:00 pm

MS 22 *ASHA's Compass: The Revised Code of Ethics*, Paul Rao, PhD, CPHQ, FACHE

SATURDAY, APRIL 21

8:00 am - 9:00 am

MS 23 *"SLAM!!" High Impact Sports and Their Impact on Student-Athletes*, Laura T. Puryear, BA; Robert Mayo, PhD; Collin Drolet, BS

8:00 am - 9:00 am

MS 24 *UNC- CH Health Affairs Partnership Initiative (HAPI)*, Brenda Everett Mitchell, MS

8:45 am - 9:45 am

MS 25 *It's a Matter of Trust: Promoting Integrity in Science*, Sharon E. Moss, PhD



9:15 am - 10:15 am – DONN F. BAILEY LECTURE

MS 26 *Music as a Mirror: A Relational Analysis of AAE & Hip Hop/Rap Music*, Iris Johnson Arnold, PhD; Cierra Love Baker; Daniel Flatt, BA; Owen Johnson, PhD; Jenna LaNier; Chareva McCullough, BS; Lauren Phillips; Lauren Prather, BS

10:00 am - 11:00 am

MS 27 *Enhancing College Student Athlete's Communication Wellness and Effectiveness*, Cherie McNeill Avent, MA; Robert Mayo, PhD

10:30 am - 11:30 am

MS 28 *Treatment Methods and Considerations for the Right Hemisphere Brain Damaged Patient*, Jocelyn Fredricka Crawford, MEd

11:15 am - 12:15 pm

MS 29 *Assessment E-Portfolio: Where the Rubber Meets the Road!*, Robin Cox Gillespie, PhD

1:00 pm - 2:00 pm

MS 30 *Using Service Learning Projects to Promote Language and Literacy Skills*, Maya R. Clark, PhD; Ebony R. Brown, BA

1:00 pm - 2:00 pm

MS 31 *Detecting Early Cognitive-Communicative Change in Mild Cognitive Impairment*, Valarie B. Fleming, PhD

1:00 pm - 2:30 pm

MS 32 *Wounded Warriors: Brain Injury and its Impact on our Communities, a Panel Discussion (presentation by BIANC and NBASLH)*, Katrina Evette Miller, MA, CBIS

This presentation will include a Wounded Warriors Panel Discussion from 2:00-2:30 pm.

2:15 pm - 3:15 pm

MS 33 *Language Sampling.....Deal or No Deal*, Cecelia H. Jeffries, PhD; Ensley S. Graves, BA

3:00 pm - 4:00 pm

MS 34 *Am I Too Young to Start a Private Practice?*, Doanne L. Ward-Williams, MEd



HIGHLIGHTED PRESENTATION

3:15 pm - 4:15 pm

MS 35 *Activation Likelihood Estimation: An Approach to Meta-Analysis in Imaging Research in CSD*, Charles Ellis, PhD

3:30 pm - 4:30 pm

MS 36 *Showing Your Face in the Place After Your Data's Collected*, Brandi L. Newkirk, PhD; Lekeitha R. Morris, PhD

4:15 pm - 5:15 pm

MS 37 *Using Family Paradigm Player Parts in Communication Disorders Intervention*, Bryan Arnold, BA; Mary Jo Cooley Hidecker, PhD; Holly Ray; Kara Johnson; Adam Wisdom; Sharon Ross, MS

Technical Sessions

THURSDAY, APRIL 19

1:45 pm - 2:15 pm

TS 1 *Dialect Density Variation by Parent Education and Age*, Janice Jackson, PhD; Barbara Zurer Pearson, PhD

4:15 pm - 4:45 pm

TS 2 *Serving English Language Learners (SELL): A Professional Learning Experience Initiative*, Karen Harris Brown, PhD

5:00 pm - 5:30 pm

TS 3 *Frontotemporal Dementias: Role of the SLP in Assessment & Management*, Kelly Julian O'Brien, MA

FRIDAY, APRIL 20

8:00 am - 8:30 am

TS 4 *Expertise of SLPs Who Work With Students Who Speak African American English*, Tamika Reynold LeRay, MS; Belinda Fuste-Herrman, PhD; Grossman Ruth, PhD; Eiki Satake, PhD

8:00 am - 8:30 am

TS 5 *Listener Judgment as a Method for Characterizing Children's Dialect*, Janna B. Oetting, PhD; Jessica S. Richardson, MA

11:45 am - 12:15 pm

TS 6 *A Journal Content Analysis Study of Women Who Stutter*, Robert Mayo, PhD; Kelly McIntyre; Alyssa Hedrick; Carolyn M. Mayo, PhD

SATURDAY, APRIL 21

8:00 am - 8:30 am

TS 7 *African American Families and End of Life Decision Making*, Sharon W. Williams, PhD

2:45 pm - 3:15 pm

TS 8 *The Marginal Cost of Aphasia: The Impact of Race*, Charles Ellis, PhD; Annie Simpson, MS

Doctoral Student Research Forums

THURSDAY, APRIL 19

1:00 pm - 1:30 pm

DSF 1 *An Auditory Processing Screening Test for Children who are Bilingual English/Arabic Speaking*, Reem Abulhamayel, MS; Nada Faquih, MS; Jay R. Lucker, EdD

3:30 pm - 4:00 pm

DSF 2 *Phonological Awareness Skills In Undergraduate Students*, Tinita Ortega, MS

5:00 pm - 5:30 pm

DSF 3 *Conversational Discourse in Right Hemisphere Brain Damage*, Jamila Minga, MS

FRIDAY, APRIL 20

1:45 pm - 2:15 pm

DSF 4 *An Investigation of the Spanish Phonetic Inventories of 3-5 Year Olds of Central American Backgrounds*, Valencia Cardora Perry, MS; Silvia J. Martinez, EdD; Miguelina Zapata, MS

2:15 pm - 2:45 pm

DSF 5 *Performance of African Americans With and Without TBI on RIPA-2*, Alaina S. Davis, MS; Wilhelmina Wright-Harp, PhD

2:30 pm - 3:00 pm

DSF 6 *Selective Visual Attention to Facial Expressions of Emotion*, April Gibbs Scott, MS; Connie A. Tompkins, PhD

SATURDAY, APRIL 21

11:15 am - 11:45 am

DSF 7 *The Impact of Prior Knowledge on Science Text Comprehension*, Mary Kristen Clark, MS

2:15 pm - 2:45 pm

DSF 8 *A Phenomenological Study of Multicultural Infusion in Communication Sciences and Disorders*, Andrea Toliver-Smith, MS; Gregory C. Robinson, PhD

4:45 pm - 5:15 pm

DSF 9 *Head Start Teachers' Complex Syntax Input*, Jamie D. Fisher, MA

Student Research Forums

THURSDAY, APRIL 19

2:15 pm - 2:45 pm

SF 1 *Success Strategies of Speech and Hearing Sciences Graduate Students*, Camille L. Walton, BS; Brenda Everett Mitchell, MS

4:15 pm - 4:45 pm

SF 2 *Working With Nigerian-Language-Influenced English Speakers: What SLPs Need to Know*, La'Kisha Georinah Udoh, BA; Robert Mayo, PhD

FRIDAY, APRIL 20

8:30 am - 9:00 am

SF 3 *Pathways to the Profession: The College Scholar-Athlete*, Shakia Je'Cole Forbes; Carolyn M. Mayo, PhD; Robert Mayo, PhD

8:45 am - 9:15 am

SF 4 *Operationalizing Social Communication in ASD: A Scoping Review*, Brittany Reed, BS; Amy Curtis Stone, BS; Mary Jo Cooley Hidecker, PhD; Byron Ross, PhD; Briano DiRezze, MS; Lonnie Zwaigenbaum, MD; Peter Rosenbaum, MD

9:15 am - 9:45 am

SF 5 *Emergent Literacy Content in Preschool Classrooms*, Aja D. Johnson, BS

10:30 am - 11:00 am

SF 6 *Cognitive Rehabilitation Using Telehealth for Veterans With TBI*, Mikel McKenzie Williams, BS; Lindsay James Riegler, MA; Jean Neils-Strunjas, PhD

Student Research Forums (continued)

11:15 am - 11:45 am

SF 7 *How Does Apraxia of Speech Affect Children?*, Jewel C. Monroe

1:00 pm - 1:30 pm

SF 8 *Speech Language Pathology Shadowing Opportunities: Building a Strong Foundation*, Chanel Iman Blaylock, BA; Brenda Everett Mitchell, MS

1:00 pm - 1:30 pm

SF 9 *The Whole Client: Improving Intercultural Service Delivery Through Service Abroad*, Ebony Roniece Brown, BA; Maya R. Clark, PhD

1:45 pm - 2:15 pm

SF 10 *Comparing DELV Scores With Listener Judgments of AAE*, Sunni Elizabeth Cottrell, BS; Shavonica Williams, BS; Kathleen Talley, BS; Valentina Taran, PhD

Scholar to Scholar: Poster Sessions

FRIDAY, APRIL 20

8:00 am - 9:30 pm – POSTER SESSION 1

- *Severe Toxic Exposure (Birth-Three): Cocaine and Other Drugs*, J'Mia Kae Alston
- *A Review of Literature and Best Practices for Pediatric Dysphagia*, Tierra LaTrice Cox, BA; Deana McQuitty, PhD
- *Correlation Between Reading and Auditory Processing Skills in College Freshmen*, Joe A. Melcher, PhD; Yaesha Joseph; Joy Sorells
- *CREAT-ive Perspectives*, Krishyra D. Williams, BA; Shauna M. Phillips, BA; Miriam N Featherstone, BA; Melissa Ross, BA; Cassandra Wade, BA; Blanca Segovia, BA; Sheila Bridges-Bond, PhD
- *Healthcare Communication, Health Literacy and Successful Aging in African Americans*, Eva Jackson Hester, PhD; Tia Tanksley; Regena Stevens-Ratchford, PhD
- *The Effectiveness of Social Stories on Discourse: A Systematic Review*, Yolanda D. Keller-Bell, PhD

10:00 am - 11:30 am – POSTER SESSION 2

- *Assessment and Treatment of Communication Disorders Associated With Cerebral Palsy*, Da'Nisha Shonte' Strong; June Graham Bethea, MA
- *Communication Activities for Living and Learning: A Community Service Project*, Jonet Artis, BA; Sara N. Hopson, BS; Sandra C. Jackson, PhD
- *Cross-Cultural Study on Parental Awareness and Perceptions of Autism Treatments*, Shauna Marie Phillips, BA; Courtney A. Long, BS; Wenye Zou, BS; Grace Hao, PhD, MD
- *Perceptions of Code-Switching Among African American College Students*, Reem Abdulhamayel, MS; Kay Payne, PhD
- *The Modified Token Test (Spanish and English) for Preschool Children*, Valencia Cardora Perry, MS; Jay R. Lucker, EdD
- *Treatments and the use of AAC With Patients With Severe Aphasia*, Jessica Lynn Smith, BS; Robin Gillespie, PhD; Katrina Miller, MA; Bria Shanese McCloud, BA

1:00 pm - 2:30 pm – POSTER SESSION 3

- *Speech and Language Development in Children With Craniofacial Anomalies*, Shakia Je'Cole Forbes
- *Bronchopulmonary Dysplasia: Impact on Communication, Cognition and Swallowing in Children*, Patience Brennae Stephenson; Carolyn Mayo, PhD
- *Chronic Traumatic Encephalopathy in Athletes*, Cherita Danese King; Carolyn M. Mayo, PhD
- *Nutritional Analysis of Food Additives: Implications for Communication Disorders*, Keiofia Katasha Mitchell; Carolyn Mayo, PhD
- *Special Educator Attitudes Toward Children With Communication Disorders in Caribbeans*, Shameka Nicole Johnson, Med; Ovetta Harris, PhD
- *Step 2 Hear: Collaboration Among SLPs and the Community*, Danita K Washington, MBA; Angela D Brown, MEd; Leah Woods-Newton, MEd

SATURDAY, APRIL 21

8:00 am - 9:30 am – POSTER SESSION 4

- *After Shock: Shaken Baby Syndrome*, Kristen Taylor Hobson, BA; Deana Lacy McQuitty, PhD
- *Analysis of Current Literature: Arteriovenous Malformation and Communication Development in Children*, Kristyn Leah Sanders; Deana Lacy McQuitty, PhD
- *ASD: A Review of Best Practices & Efficacy Studies for Speech-Language Pathologists*, Brenda Lynette Williams, BA; Deanna McQuitty, PhD
- *Assessing Speech and Reading Fluency Performance in College Level Students*, WaNelle J. Anderson, PhD; Ronald C. Jones, PhD
- *Telehealth: A Speech-Language Intervention For Adolescents With TBI*, Lauren E. Robinson, BS; Michele L. Norman, PhD; Shannon Salley, SLPD
- *Variations in Value Orientations of Parents, Teachers and Speech-Language Pathologists*, Mona Bryant-Shanklin, PhD; Ronald C. Jones, PhD

10:00 am - 11:30 am – POSTER SESSION 5

- *Auditory Processing Testing: Is There a Need to Use a Sound Treated Test Booth?*, Nicolle Franklin, Brittani Hightower; Martin Nyanzu; Kierra Villines; Jay R. Lucker, EdD
- *Integration of Rhyming, Story Retelling and Kinesthetic Into Language Therapy*, Maggie Connelly, BA; Kerry Dorn, BA; LaTeka Kegler, BA; Sonya Shepard, BS; Mandy Stevens, BA; Regina Lemmon, PhD
- *Medical Professionals Perceptions of the Effectiveness of E-Stim for Dysphagia Therapy*, April Burris Chisholm, BA; Lorena Centurion, BA; Elizabeth Govan, BS; Lindsay Moore, BA; Kristina Smith, BA; Regina Lemmon, PhD
- *Past Marking in Narratives: Strategies Used by Young AAE Speakers*, Samantha Michelle Downie; Frances Burns, PhD
- *SC Public Schools Teachers' Perceptions of Dialectal Differences*, Robert Cox, BA; Jakiya Evans, BA; Jada Swan, BA; Valerie Bell, BA; Regina Lemmon, PhD
- *Speech-Language Pathologists Perceptions of School-Based Dysphagia Therapy*, Felicia Cantey Cantey; Kelly Crowe, BA; Julie Kennedy; Regina Lemmon, PhD
- *The Effectiveness of the SACCA Model for Collaboration*, Britany Burke, BA; Ashley Jones, BA; Shannon Mitchell, BA; Courtney Nesmith, BA; Regina Lemmon, PhD



**NATIONAL BLACK ASSOCIATION FOR
SPEECH-LANGUAGE AND HEARING**

700 McKnight Park Drive, Suite 708
Pittsburgh, PA 15237

Presorted
Standard
U.S. Postage
PAID
Pittsburgh, PA
Permit #2191

**2012 NBASLH Convention
April 19-22
Raleigh, NC**

Registration Information

- **Registration fees include Opening Reception and NBASLH Annual Awards Dinner.**
- Full payment must accompany the Registration Form.
- Purchase Orders (PO) accepted. All registration forms must accompany PO.
- Receipt for payments will be given at the Convention.
- Membership dues for 2012 must be paid prior to/along with Convention registration fees to qualify for the member rates.
- Non-Members may join NBASLH prior to Convention to register at the member rate.
- All registration forms must be postmarked no later than March 12, 2012, to receive the early registration rate.
- Late registration after March 12, 2012, does not guarantee the inclusion of tickets to meal events.
- A refund less a \$25 processing fee will be issued if the NBASLH Office is notified in writing no later than March 28, 2012.
- All persons attending the Convention must pay a registration fee. If you feel you do not fit in one of the registration categories, call 412-366-1177.



Hotel Information



**Raleigh Marriott City Center
500 Fayetteville Street
Raleigh, NC 27601**

Room Rate: \$135

Please note the hotel may not be able honor the above rate beyond March 26, 2012.

Hotel reservations may be made by calling the Raleigh Marriott City Center at 919-833-1120 and identify yourself as a participant of the NBASLH 2012 Convention. For more information, you can visit their website at <http://www.marriott.com/hotels/travel/rdumc-raleigh-marriott-city-center/>.

Known for the Research Triangle Park, North Carolina's capital is home to several prestigious universities, high-tech, pharmaceutical companies and great entertainment. And with the downtown Raleigh hotel's location, you will be in the heart of it all.

Getting to the Raleigh Marriott City Center

Airport – Raleigh-Durham - RDU

Shuttle fare from S&H Transportation is \$35 (one way) – reservation required

Estimated taxi fare – \$35

