



Resound))))

Summer 2008

Newsletter of the National Black Association for Speech-Language and Hearing

National Black Association for Speech-Language and Hearing

Website:
www.nbaslh.org

IN THIS ISSUE:

2009 Convention Information and Call for Papers

Affiliate News

2008 NBASLH Award Recipients

NBASLH Executive Board

NBASLH's Growth

SC State University

Different Clinic Windows

From the Chair



Politics is about building relationships. Relationships are simply connections that are formed to benefit shared interests. At the heart of this process is communication, the essence of our work as speech-language pathologists and audiologists. We know the theory behind pragmatics or social skills and the four components of discourse. We use non-verbal information to facilitate favorable outcomes. We are attuned to the importance of hearing integrity. We transform oral language into written formats for a different and perhaps more enduring expression of our ideas.

These are exactly the skills we would use to further our relationships with the Congressional Black Caucus (CBC), and those members and staff who attended our Breakfast Briefing on April 17, during our 30th Anniversary Convention. A monumental success that was well attended and followed by articles in major publications. But it will be just another visit to the "Hill" whose impact will fade if we do not strategically plan to further this relationship. We will use for ourselves the skills we teach our clients. There is a persistence involved in any relationship typically with the one having the most to gain working the hardest. NBASLH will do this by submitting periodic articles in *Resound))))*, establishing a webnote on our website to ASHA's advocacy link for updates on current bills. We will host events for congressional members as part of future conventions. Lastly, we will encourage affiliates to maintain the conversations at the local levels with the CBC members.

This is a new venture for NBASLH but one we can do because we know the elements required for successful communication. We teach the skills to others; now is the time to use these skills for NBASLH.

Cathy Runnels

Cathy Runnels, M.S., CCC-SLP
NBASLH Chair

2009 Convention Call For Papers

2009 Convention
Hyatt Regency Atlanta
Atlanta, Georgia
April 16-18, 2009

NBASLH SPEAKS:
Literacy and Literally

NBASLH is now accepting Call for Papers for the 2009 Convention in Atlanta, Georgia. Please visit the website at www.nbaslh.org to submit your presentation.

The Convention will be held on April 16-18, 2009, at the Hyatt Regency Atlanta. Educational programs can be in the form of sessions or poster presentations.

To submit your Call for Paper, log on to the NBASLH website:

www.nbaslh.org

Deadline for submissions is:
November 3, 2008

If you have any questions, please contact the NBASLH Office at

2009 Convention

Room Rates:

\$135 Single

\$160 Double

\$185 Triple

\$210 Quad



News From the Southern California Affiliate

The Southern California Affiliate is in recess until September 14, 2008. At that time, the quarterly business meeting will be held at the Historic Lady Effie's Tea Parlor, a Black-owned business, in Los Angeles, California. The meeting will be followed by a Fund Raising Tea for members and friends. Proceeds will be applied to the Scholarship Fund. For more information, please email Dr. Faye Williams, Scholarship Chair at prairieplace@sbcglobal.net.

Southern California Affiliate member Soloris J. Greene will travel to South Africa as part of a Speech-Language Pathology and Audiology Delegation August 11-21, 2008. Alex Johnson, Ph.D., CCC-SLP is the Delegation Leader.

Our Affiliate of the Year Award (Deadline February 15, 2009)

The National Black Association for Speech-Language and Hearing (NBASLH) announced in 2007 the creation of the Affiliate of the Year Award to honor an affiliate that exemplifies high standards of programming for its members and community.

It was the hope of the NBASLH Board, to present the first award during the 2008 Convention. NBASLH received no nominations for this award in 2008.

Nominations are now being requested for the Affiliate of the Year Award to be presented during the 2009 Convention. Deadline for submission is February 15, 2009.

The Affiliate of the Year Award is awarded to an outstanding affiliate that represents high standards of excellence to which all affiliates should aspire.

Examples of accomplishments include, but are not limited to, the following:

- Increasing affiliate membership by 5% during a year (as compared to the previous year). Submit a membership roster for the most recent two consecutive years.
- Conducting professional development events for affiliate members (e.g., workshop, conference, study group). Attach a brief description of the event and include any supporting materials.
- Developing or maintaining a program or activity to address the recruitment and retention of future speech-language pathologists, audiologists and speech-language-hearing scientists.
- Conducting a program or activity to address the unique communication needs of the local community (e.g., community outreach, community awareness).

For more information, please visit the Affiliates section of the website, www.nbaslh.org.

2008 NBASLH Award Recipients

Congratulations to the following NBASLH members who were granted awards at the 2008 NBASLH Convention:



Constance Qualls
William T. Simpkins, Jr. Service Award



Michele L. Norman
Scholar Mentor Award



Andi Toliver-Smith
Student Research Award

Dr. Abbie Prentice

Remembered



Dr. Abbie Prentice, a Southern California Affiliate member passed away in February 2007. She was a retired speech-language pathologist from the Los Angeles Unified School District and a Professor in Reading at the Claremont University in Claremont, California. Dr. Prentice obtained her doctorate degree from Claremont University.

Dr. Prentice was a sought after lecturer in this field, and she traveled to China, Russia and South Africa and many other places speaking on reading research. She was a member of NBASLH since the early 1980s, and has served as Assistant Treasurer, Fund Raising Chair, Career Advisory Committee member and Scholarship Chair.

Dr. Prentice was also a member of the Chicago Metropolitan Ballet Troop in 1949. She was married to Clifford Prentice in 1956 and is the mother of two adult children, Amanda and Jonathan and two grandchildren. Her presence and contributions to our Affiliate is sorely missed.

*Submitted by Soloris Greene
Southern California Affiliate*

NBASLH Executive Board

September 1, 2008-August 31, 2009

Cathy Runnels, Chair
Editor – Resound))))
accentonspeech@yahoo.com

Arnell Brady, Chair Elect
aaarnell@aol.com

Yolanda Fields, Secretary
Yolanda.Fields@HCAHealthcare.com

Jonathan Love, Treasurer
mrlove02@hotmail.com

Byron Ross, Parliamentarian and Awards
bross@uca.edu

Iris Johnson-Arnold, Convention Chair
ijohnson@tristate.edu

Sherri Lovelace
slovelace@astate.edu

A.B. Mayfield-Clarke, Awards
bc62489@sbcglobal.net

Michele L. Norman, Director
PRAXIS Program
drmlnorman@hotmail.com
normanml@longwood.edu

Travis Threats
Editor – ECHO
threatst@slu.edu

Doanne Ward
doanne_ward@yahoo.com

Jamila Foreman, Student Representative
jforema3@mail.nccu.edu;
jamila.foreman@gmail.com

**Diane Yenerall, NBASLH Business
Manager**
800 Perry Hwy, Suite 3
Pittsburgh, PA 15229
412-366-1177
412-366-8804 (Fax)
NBASLH@nbaslh.org

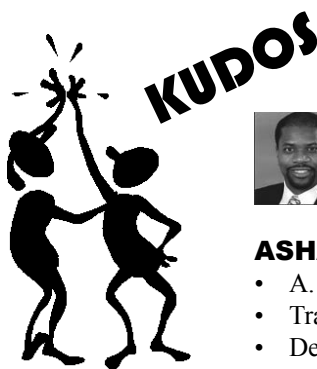
Ron Jones: Moving From the Board but Not From NBASLH



Ron Jones, Communication Sciences and Disorders Program Coordinator at Norfolk State University, has completed his term as Past Chair of NBASLH and will rotate from the Board on August 31, 2008. Dr. Jones' contributions have been significant, including development of the Ambassador Program, expansion of the journal

ECHO and current work on a book of the history of NBASLH along with Gene Wiggins, Robert Mayo and Robert Screen.

Dr. Jones was involved in the early development of NBASLH as a graduate student and has actively supported the organization. NBASLH is rooted in the foundation of many greats, and Dr. Jones sits prominently among them. Thank you Dr. Jones.



Tommie L. Robinson, Jr., recently elected as the 2009 ASHA President-Elect.

ASHA 2008 Fellow Recipients:

- A. Bernadette Mayfield-Clarke
- Travis T. Threats
- Deirdre R. Trent

Kay T. Payne, recipient of the ASHA 2008 Certificate of Recognition for Special Contributions in Multicultural Affairs.

Did You Know?

- ◆ Wanda Miller, "The Milwaukee Affiliate of One" reports attending all 30 NBASLH Conventions.
- ◆ Ida Stockman reports attending all but five of the 30 Conventions.

These members represent extraordinary commitment to the Association and a valuable perspective as we grow. Let us know if the number of conventions you've attended is 20 or more. Email us at nbaslh@nbaslh.org, or call the NBASLH Office at (412) 366-1177.



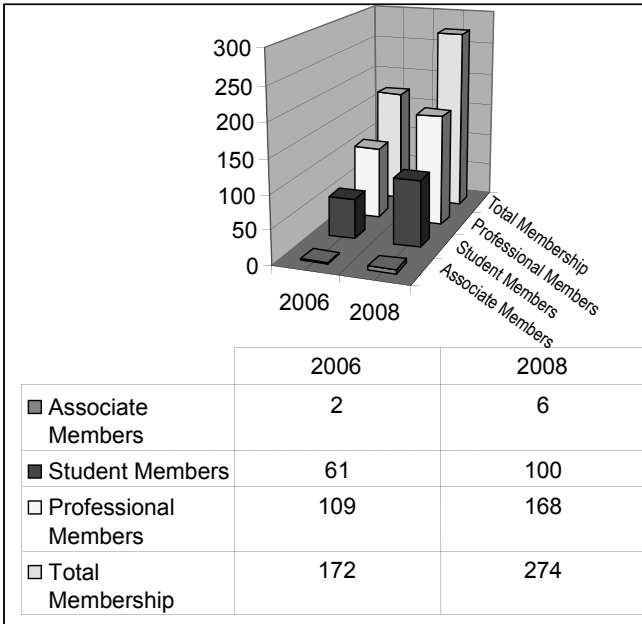
NBASLH 2008 Convention was mentioned in the following publications:

- *ASHA Leader*, May 27, 2008 (www.asha.org/about/publications/leader-online)
- *SpeechPathology.com*—archives, May 29, 2008
- *Audiology OnLine.com*—archives, May 20, 2008

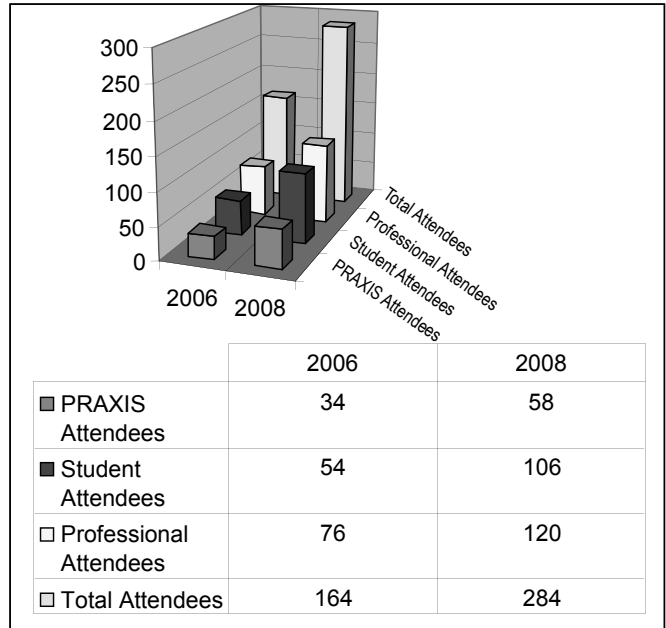
NBASLH is Growing!

Since 2006 NBASLH has seen growth in Membership, Convention and PRAXIS Review attendance. Membership has grown by 60% and the Convention and PRAXIS Review have grown by 73%. Check out the grids below to see how NBASLH has grown.

NBASLH Membership



NBASLH Convention



Thanks to the NBASLH Membership for helping to make its Convention and Memberships such a success!!!

Silent Auction to Benefit the Student Research Award

During the 2008 Convention, NBASLH conducted the second Silent Auction to benefit the Student Research Award. A total of \$634 was raised at the auction.

In order for the 2009 auction to be a success, we would like you (universities, companies, groups, organizations, individuals) to donate an item to the auction that you feel someone would like to have and would be willing to bid on. Items can include specialty gift baskets, memorabilia from your state or university, art, places to vacation, etc.

NBASLH appreciates any donations that you can bring to the Convention. If you are unable to attend the Convention and would like to donate an item, contact Diane Yenerall at the NBASLH Office, 412-366-1177 or nbaslh@nbaslh.org.



2008 Convention Donor

Zohra Hair Salon – Tuckerman Mall,
Rockville, Maryland
Thanks for the \$150 contribution!

Thanks

I would just like to thank all of the presenters from the NBASLH PRAXIS Review course! With their help I was able to pass the PRAXIS exam the first time! Thank you!

Adrienne



South Carolina State University Department of Health Sciences 2008 NBASLH Convention Experience

A record 22 students and four faculty members from the Speech Pathology and Audiology Program boarded a university bus at 11 pm on April 16, heading for Alexandria, Virginia and the 30th Anniversary NBASLH Convention. It was a long bus journey, but well worth it. Students and faculty attended convention sessions, a student luncheon, and an awards ceremony and dinner. Dr. Harriette Gregg, Ms. Debra Frishberg, and their student assistants presented a poster representing their augmentative communication grant project.



One of the highlights of the trip was a tour and reception at the new ASHA national headquarters building. It was followed by a dinner in honor of NBASLH's 30th Anniversary. Students were excited to learn about the association, its history and related professional issues.

Although it was difficult to board the bus for home, students and faculty alike were eager to share their experiences with colleagues and friends back in Orangeburg, South Carolina.



A Peek at Our Past

SOUTH CAROLINA STATE UNIVERSITY SPEECH PATHOLOGY AND AUDIOLOGY PROGRAM

- First Training Program in Speech Pathology and Audiology in South Carolina: Undergraduate program in speech correction enrolled its first class in September, 1957.
- First Speech, Hearing and Language Clinic on a college or university campus in South Carolina: *South Carolina State College Speech and Hearing Clinic began offering its services to the public in September, 1967. It was the only speech and hearing facility in a seven-county area.
- First Students to do Full-time Practice Teaching in Speech Correction in the Public Schools of South Carolina: Five seniors began the six-week experience in January, 1968. They were Brenda Durrah, Bunnie Gordon, Sylvia Larrymore, Anita Middleton, Jean Stevens.
- First Intervention Program for Hard-of-Hearing/Deaf Children in Orangeburg County: The program was initiated at the South Carolina State College Speech and Hearing Clinic in September, 1969.
- Faculty and students from South Carolina State College conducted the first state-wide speech, hearing, and language screening of Head-Start children in the state in 1975-76. They screened over 5,700 Head-Start children in 43 of the state's 46 counties.
- First Intervention Program for Autistic Children in Orangeburg County: The South Carolina State College Autistic Nursery began operation in September, 1978.

At the request of Dr. Gwendolyn D. Wilson, current Department Chair, these historical highlights were composed by Dr. Harold Powell, the first Chairman of the Department. Dr. Powell, now retired Professor Emeritus, recipient of SCSHA's Frank Kleffner Clinical Career Award and ASHA Fellow, assists the Department as Adjunct Professor:

**South Carolina State College became South Carolina State University in 1992.*

Different Clinic Windows



In April of 2008, this clinical speech-language pathologist spent eight days in Lagos, Nigeria, West Africa, assisting with the development and opening of a special language learning center (Brain Tech International Center) in Lagos. The trip also included lecturing on communication disorders, and assessing and treating Nigerian children and adults with speech-language disorders.

I was far from my private practice, 6,600 square-foot, stand-alone comprehensive speech-language pathology clinic in the United States on the far south side of Chicago, Illinois, where I can look out of a clinic window and see manicured lawns, well-kept, middle-class, single-family homes, and children walking to the neighborhood schools with uniformed crossing guards and parents on the street corners to help them cross the street as bright, shiny, yellow, school buses glide down the streets. When I look out of that clinic window I think about numerous federal and state special educational laws that protect and provide for school-aged children with speech-language disorders. When I look out of this window I know there are comprehensive health insurance plans that pay benefits for the assessment and treatment of children and adults with speech-language disorders.

Children and adults in the United States with speech-language disorders can be helped with relative ease in overcoming their speech-language disorders, if they can access the services. Modern clinical management is highly advanced in the assessment of the communication mechanism and treatment interventions.



Looking out of the clinic window in Lagos, there are no special educational laws to protect and provide for school-aged children struggling with speech-language disorders. It has been estimated that 35% of school-aged children would benefit from professional speech-language pathology services. However, there are no speech-language pathologists in Lagos. There are no comprehensive health insurance plans that would pay benefits to help children and adults struggling with speech-language disorders that could easily be cured with the appropriate intervention. From that clinic window in Lagos I saw people living in shacks made from tin and wood with no electricity or running water. The view from that window in Lagos showed me Nigerians view speech-language disorders as a “curse” that they are powerless to change.

Hopefully, the new special language learning center in Lagos will have a positive impact on the establishment of speech-language pathology services in Lagos, Nigeria. Having the opportunity to look out of those two clinical windows reminded me of the powerful influence the environment has on the problems inside the clinic. The speech-language disorders present inside those two different clinic windows were the same. The people in Chicago and the people in Lagos had the same types of speech-language disorders with the same types of causes and degrees of severity. The difference is in what can be done about the disorder. Looking inside the windows we see that the situations are the same but, looking outside the windows we see that the situations are totally different. With today’s American-style clinical management of speech-language disorders in children and adults, we know that many of those types of communication problems can be readily cured in a supportive environment.

Arnell A. Brady

Arnell A. Brady, M.A., CCC-SLP/L
NBASLH Chair Elect
Chicago, Illinois



Competency in Communication

At our 30th Anniversary Convention, when a member asked, “What is NBASLH all about?” There was a noticeable hesitation in the Board members’ response. We could have responded with our vision statement “The National Black Association for Speech-Language and Hearing is the premier professional and scientific association addressing the communication interests and concerns of black communication science and disorders professionals, students and consumers.” Because there was hesitation, however, begs the question, “Are we sure about what it is NBASLH should be doing?”

Where increasing numbers of black school-age children are failing to meet minimum academic standards of language and literacy performance; where disparity in the provision of clinical speech-language and hearing services to minority communities persist; where academic and clinical training programs go wanting each year for more qualified racial and ethnically diverse students. Our response to the question “What is NBASLH all about?” should have been prompt and emphatic. We are about competency and promoting it in services we provide our clients and in the students we train. Competency must define everything NBASLH does.

Right now, NBASLH struggles to instill in its younger members the passion and dedication that founding members needed in order to survive. Few, if any, of our younger members have experienced open racism or discrimination, so it is difficult to convey to them the need to show that they are as good as some and better than others. Promoting competence has to become our mantra.

If asked again “What is NBASLH all about?” I will say, “making a difference in the lives of black children and adults with communication disorders by being competent in everything I do.”

Dr. Ronald Jones

Dr. Ronald Jones, M.A., CCC-SLP/L
NBASLH Past Chair
Norfolk, Virginia

2008 Convention Photo Gallery

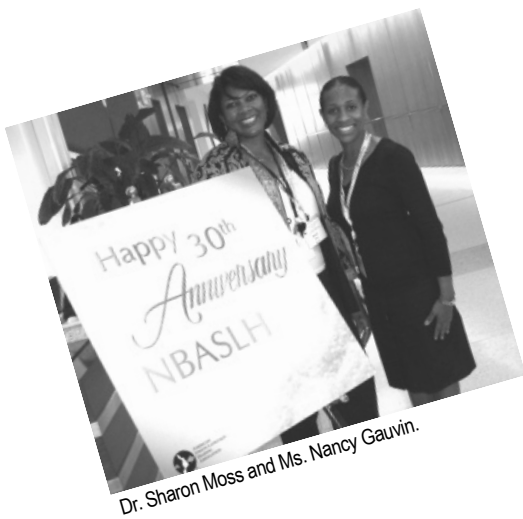


Dr. Barbara Guillory, Mr. Kenyatta Rivers and Dr. Ida Stockman

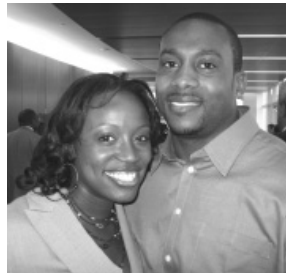


Dr. Catherine Gottfred, Dr. Rachel Williams and Ms. Cathy Runnels

ASHA Open House



Dr. Sharon Moss and Ms. Nancy Gauvin.



Ms. Kia Johnson and Mr. Deric Johnson



Dr. Bernadette Mayfield-Clarke



Mr. Jonathan Love, Dr. Travis Threats and Dr. Iris Johnson-Arnold



Convention attendees

Check out the NBASLH website, www.nbaslh.org for additional pictures.



Mark Your Calendars

2009 NBASLH Convention Call for Papers Deadline
November 3, 2008

Membership Renewals Mailed
Early November, 2008

Convention Program Mailed
February, 2009

Nomination for NBASLH Board of Directors Deadline
January 15, 2009

Nomination for NBASLH Awards Deadline
February 15, 2009

NBASLH 2009 Convention
April 16-18, 2009

PRAXIS Review
April 16-18, 2009

Resound))))

Do you have news to share?

Members are encouraged to submit items for consideration and publication in the **Resound))))**. Topics include articles of interest to the membership and areas that pertain to SLPs or Audiologist.

Share your good news and accomplishments!

If you have a story, announcement or event you would like to place in the **Resound))))**, please send your information to:

Diane Yenerall, MPM, CAE
NBASLH Business Manager
nbaslh@nbaslh.org

www.nbaslh.org

Check www.nbaslh.org for Event Updates and Reminders!

Resound))))

NEWSLETTER OF THE NATIONAL BLACK ASSOCIATION FOR
SPEECH-LANGUAGE AND HEARING
800 Perry Highway, Suite 3
Pittsburgh, PA 15229-1128