



Resound))))

July, 2005
Volume 2, Number 2

Newsletter of the National Black Association for Speech, Language and Hearing

National Black
Association for
Speech-
Language and
Hearing

Website: nbaslh.org



2005 NBASLH Convention Highlights:

- Presentations
- Student-Mentor Luncheon
- Community Outreach Project

History of NBASLH

Affiliate News Needed

Commentary

Highlights from the 27th Annual Convention of the National Black Association for Speech, Language & Hearing Richmond, VA April 21-23, 2005

2005 NBASLH Annual Convention Presentations:

Attention Presenters! If you presented a student forum, technical session, mini-seminar, poster session and/or a short course at the 2005 convention, but your name or presentation does not appear in the following listing, please send notification to webmaster@nbaslh.org.

Student Forum

- Akrie, A., & Mayo, R. *SLP Career Options for CSD Students not pursuing Graduate Training*
- Bryan, E., Layton, T., & Bridges, S. *The Availability of Pre-Literacy Materials in the Homes of African-American Preschoolers*
- Collier, M., & Mayfield-Clarke, A. B. *Incidence of Stroke in African American Children with Sickle Cell Disease*
- McZeke, W., & Mayo, R. *SLP Student and Layperson Opinions of Stuttering Causation*

- Mitnaul, J., & Mayfield-Clarke, A. B. *The Prevalence of Motor Speech Disorders in African-Americans with ALS*

Technical Sessions

- Lovelace, S. *EBP (Evidence Based Practice) How to Gather and Apply Evidence for Clinical Intervention*

Poster Sessions

- Coleman, T. Factors Relating to Early Literacy Development in Minority Children
- Freeman, E. & Payne, K. *Understanding Cultural Characteristics of Gangs for Effective Service Delivery*
- Harrell, K., & Higdon, C. W. Survey of Speech-Language Pathologist Knowledge of the Transdisciplinary Service Model
- Hedges, E., & Mayfield-Clarke, A. B. *The Pragmatics Revolutions: Examination of Communication Functions in African American College Students*
- Jones, R , & Williams, C. *Maintaining the CCC-A and CCC-SLP: Mandatory Professional Development*
- Lacy-McQuitty, D. *Guidelines for Managing Culturally Diverse Populations in a Rural Setting*
- Matthew, J., Ichille, I., Bernstein-Ratner, N., & Newman, R. *Mothers' & Fathers' Child-Addressed Speech Varies by Race & SES*
- McLeod, A. *Fast Mapping from Storybooks: A Study of Preschool Children*
- Morrison, J., & Mayfield-Clarke, A. B. *Pragmatic*

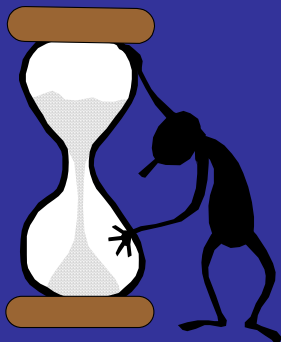


Language Function: Understanding the Male Gender

- Reid, S., & Mayfield-Clarke, A. B. *Testing and Treatment of Aphasia in African Americans in the Southeast*
- Saunders, B., Bridges, S. *Understanding Communication Patterns of Bilingual Families for Effective Communication*
- Sherron, B., Payne, K., Abullah, Y., & Wright, C. *Clinical Implications for Multicultural Populations*
- Steadman, L., & Mayfield-Clarke, A. B. *Prevalence of Communication Disorders in African-American Children with TBI*

Mini-Seminars

- Brady, A. *A Neurobiological Approach to Clinical Language Management*
- Brady, A., Brewster, C., Enwefa, R., Enwefa, S., Harris, O., Odell, D. *Swallowing Prevention and Intervention in Schools: Culturally Responsive Practice*
- Brady, A., Lesley, M., Runnels, C., Williams, T. *Private Practice: A Viable Career Option*
- Fleming, V. *"What's up Doc?": The Truth About Health Literacy*
- Haywood, P. and Prosper, T. *Speech, Language and Lead: Outcomes for Inner-City Preschoolers*
- Hill, I. *Reading Assessment and Intervention in Children with Communication Disorders*
- Jones, R. *Intervention Services for College Students with Oral Communication Problems*



- Jones, R., Moore, E., Scott, D. *Audiology: Yesterday, Today, & Tomorrow*
- Martinez, S. *Increasing Health Literacy in Communication Sciences and Disorders Through Technology*
- Person, C. *On-line Distance Learning for SLPs*
- Robinson, J. *Children & Adolescents with Emotional/ Behavioral Disorders*
- Samuels-Shields, J. Anzelmo, M. *Speech Box: Fun Ways to Teach Young Children to Talk*
- Taylor, M. *Literacy Language Acquisition-Principle*
- Taylor, M. *Qualitative Unit Analysis: Why, What, and How*
- Wright-Harp, W., & Cole P. *Mentoring: A Mechanism for Building Pathways to Successful in Graduate Education*

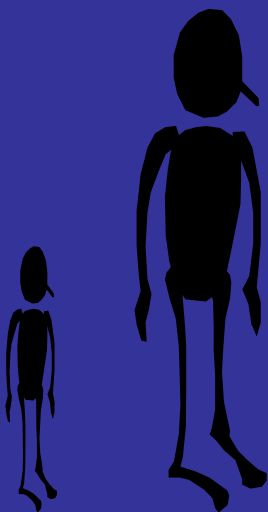
Short Courses

- Enwefa, R., Enwefa S., Harris, O. *AAC & Cultural Literacy Perspectives in School*
- Hooper, C. *Diagnosis and Treatment of Voice Disorders*
- Robinson, T. *Working with Children & Adolescents who Stutter: Some Tips for the Clinician*
- Taylor, M. *Epileptiform Cognitive/Linguistic Dysfunction*

Doctoral Student Research Forum

- Elie, M., Payne, K., & Wright-Harp, W. *Performance of*

*NBASLH was
incorporated
in Washington
D.C., June 30,
1978*



AAE & Hatian Creole Speakers on Test of Language Ability

- Hartfield, K., Conture, E., & Graham, C. *Communicating Variables, Preschoolers' MLU and Stuttering: Preliminary Findings*
- Humbert, I., Wright-Harp, W. & Ludlow C. *Effects of Vital Stim on Hyo-laryngeal Elevation in Normals*
- Lacy- McQuitty, D. *Comparing African-American Children's Vocabulary Size & MLU: Low V. Middle Income Strata*

If you are interested in contacting any of these presenters, send your request c/o [nbash@nbash.org](mailto:nbaslh@nbash.org) . Presenters will be notified.

History of NBASLH (a recurring feature)

In December, 1977, an Ad Hoc Committee on association development was established. The committee was composed of a number of Black Speech-Language Pathologists and Audiologists from different parts of the country. The Committee's first formal meeting was held at Howard University in Washington D.C. on January 26, 1978. Their mission was to discuss:

- 1) the concept of a Black speech-language and hearing association
- 2) to develop recommendations for implementing that concept
- 3) recommendations for appointing the Board of Directors and Executive Staff

The Association was incorporated in Washington D.C., June 30, 1978. The committee wanted to establish a viable mechanism through which the professional needs of the Black professionals, students and the communicatively handicapped community could be met.

The first official meeting of the Board of Directors and Executive Staff of the National Black Speech-Language and Hearing (*NBASLH*) was held April 14-15, 1978 at the University of the District of Columbia.

It is important to note that the concept of a National organization for Black speech-language pathologists and audiologists was a new one. For several years prior to the incorporation of *NBASLH*, a number of people had spoken favorably of the need to establish such an organization. Indeed, it was attuned to the movement of other Black professionals such as physicians, dentists, lawyers, psychologists, social workers, accountants and educators who had established organizations that focused primarily upon interests and concerns of Black

professionals and students-in-training.

*Please note the term Black originally used in 1979 continues to be used by this organization to refer primarily to the populations in American having African ancestry.

Purposes of NBASLH

1. PROMOTE an increase in the number of certified Black speech-language and hearing professionals.
2. PROMOTE improvement in the quality of speech, language and hearing services of the Black communicatively handicapped.
3. PROMOTE the research and development of a body of knowledge of the identification, diagnosis and treatment of the Black communicatively handicapped.
4. SOLICIT and provide financial support for the training of Black students in the fields of speech-language and hearing.
5. BE AN ADVOCATE for the Black communicatively handicapped at the local, state and national levels.
6. DISSEMINATE INFORMATION among the professions and to the public on communication differences and disorders among Blacks.



“Mentoring” Commentary by Ron Jones

“Just Do It!”

Comments printed here are those of the author(s) and are not necessarily the views of NBASLH.

*To Contact the
Resound)))
managing editor
send E-mail c/o
nbash@nbash.org*